

INTERNATIONAL BUILDERS



561 Boylston Street, Suite 200
Boston, MA 02116

31 Central Street, Suite 200
Wellesley, MA 02482

INTBUILDERS.COM



Where craftsmanship still counts.




WHO WE ARE

We never settle for anything less than unique and creative ideas — and neither should you.

With more than 40 years of industry experience, International Builders, Inc. proudly serves the Greater Boston area and beyond.

The foundation of all we do is our dedication to excellence and delivering on the needs of each client individually.

Through our vast experience, passion for craftsmanship, and commitment to service, we go the extra mile to ensure clients are delighted with their project.



“Charlie puts his heart and soul
into every project and pays
attention to every detail. His
passion for executing the best
product is flawless.”

DAVID D'ALESSANDRO, VILLA OWNER



OUR MISSION

We stand for integrity, craftsmanship, and trust as essential elements for the success of any building project, no matter the scope, scale, or style.

OUR VISION

We believe that maximizing the functionality and beauty of any space will enhance everything that happens there: family life, work, celebration, relaxation.





Our Work

OUTBUILDINGS & GLASS HOUSES	8
DESTINATION HOMES	28
HISTORIC RENOVATIONS	42
SINGLE FAMILY HOMES	50
CONDOS & APARTMENTS	72
KITCHEN RENOVATIONS	86
COMMERCIAL PROJECTS	92



OUTBUILDINGS & GLASS HOUSES

Follow your inspiration.

Our signature Glass Houses and outbuildings are freestanding, custom-built structures that expand the possibilities of your home and landscape. From flexible-use living areas to purpose-built buildings and garages, these unique spaces can truly be whatever you imagine.



SEE MORE OUTBUILDINGS &
GLASS HOUSES ON OUR WEBSITE

RIVERDALE GLASS HOUSE

A European-inspired entertainment space.

Modeled after an open-air structure for socializing in Greece, the original Glass House is adapted to the New England climate with oversized sliding glass doors that fully open in fair weather and all the comforts of the main residence on the property.



Garage with car lift



Exterior of glass house



Living space with glass doors

ABOUT THIS PROJECT

New construction
on existing property

Features

- Entertaining space
- Garage with lift
- Metal roof
- Gas fireplace
- Custom wine rack
- Kitchenette
- Full bathroom



Living and entertaining space with gas fireplace and kitchenette



Pool room with custom wine cabinet



Kitchenette and wet bar

WELLESLEY COTTAGE POOL HOUSE

Transforming an outdoor escape.

A small, outdated garage underwent a dramatic makeover to begin its new chapter as a cozy poolside cottage expanding the possibilities for outdoor entertaining at this family home in Wellesley.

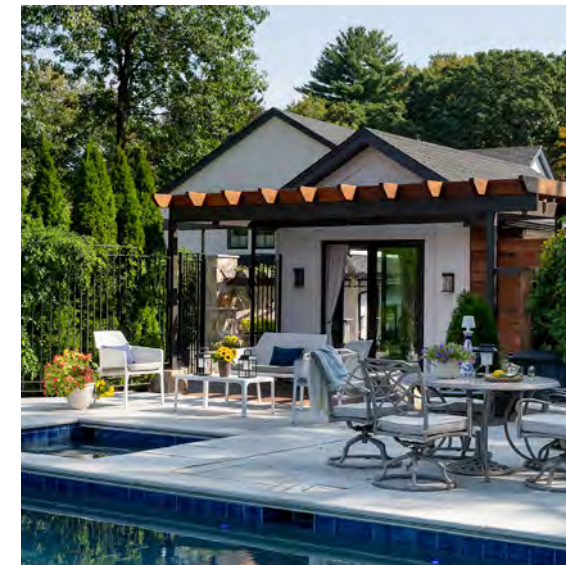


WELLESLEY, MA

Cottage exterior



Finished living space with fireplace



Poolside patio and entertaining area

ABOUT THIS PROJECT

New construction
on existing property

Features

- Bar and beverage fridge
- Full bathroom
- Outdoor shower
- Entertaining patio
- Small gas fireplace



Pergola and patio that opens to pool and jacuzzi

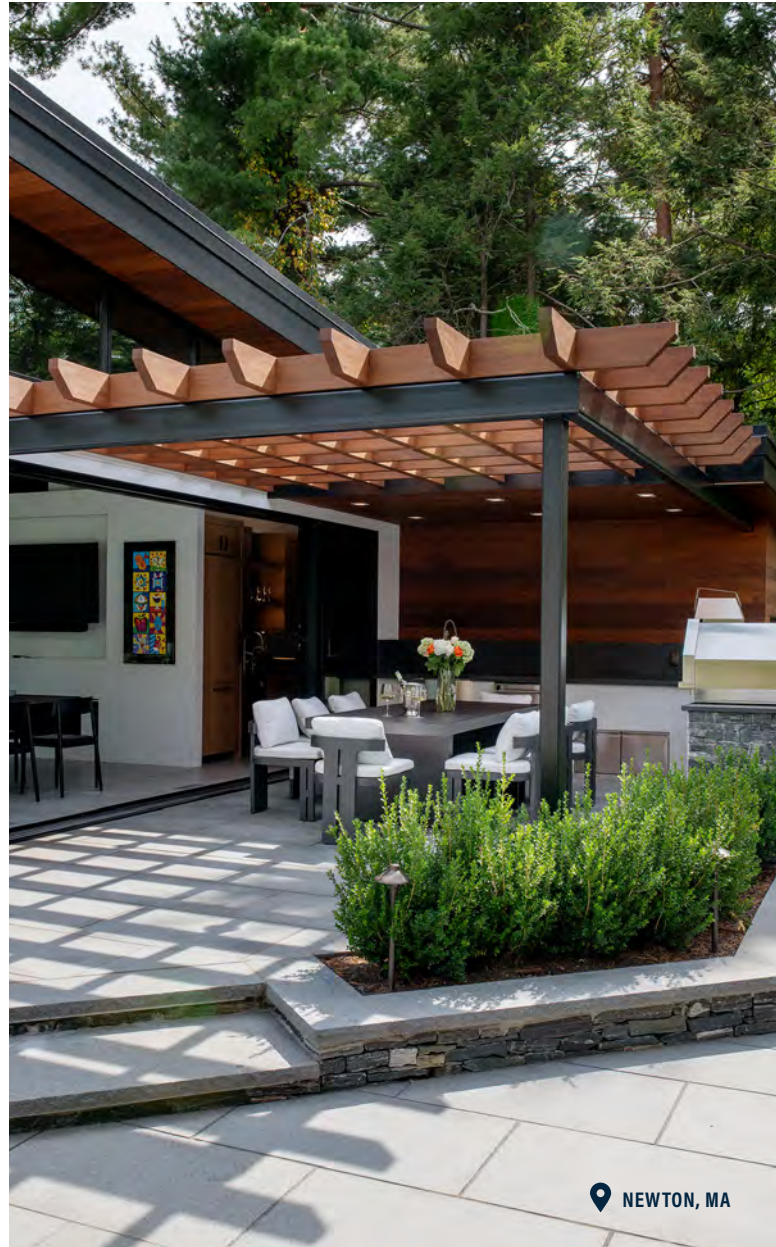


Pergola and stone fire pit

GLASS POOL HOUSE & PATIO

Poolside reflections

Complete with a sauna and pergola-shaded outdoor kitchen, this project delivered impact and functionality alongside the newly installed custom pool.



Patio and outdoor kitchen with covered pergola



Exterior front and pool patio



Interior entertaining space

ABOUT THIS PROJECT

New construction
on existing property

Features

- Entertaining space
- Gas fireplace
- Kitchenette
- Sauna
- Outdoor kitchen
- Outdoor shower
- Full bathroom

CLARK ROAD GARAGE AND GUEST HOUSE

A new garage — and so much more.

Pairing a nine-car garage with an expansive second floor dedicated to the pursuit of fun, this project provided the homeowners with dedicated space to enjoy their hobbies and entertain with ease.



NEEDHAM, MA

Kitchenette with island



Garage exterior



Second floor balcony

ABOUT THIS PROJECT

New construction
on existing property

Features

- Nine car garage
- Kitchenette
- Golf simulator
- Balcony with covered pergola
- Pool table



Pool room with sliding glass doors to patio



Second floor seating area with golf simulator



Garage

CHERRY STREET GLASS HOUSE

An open-air experience.

Seamlessly integrating indoor and outdoor dining spaces, this project significantly expanded the homeowner's available entertaining space for every season.



Outdoor patio with firepit



Loft style entertaining space with gas fireplace



Oak arched powder room door

ABOUT THIS PROJECT

New construction on existing property

Features

- Outdoor kitchen
- Kitchenette & Wet bar
- Gas fireplace
- Collapsible staircase
- Full bathroom



Outdoor kitchen dining patio



Kitchenette and wet bar



Outdoor kitchen with gas grill and pizza oven



DESTINATION HOMES

Creating exceptional properties in striking locales.

Whether selecting a domestic location or building abroad, destination homes often have unique requirements. With a partner that brings significant experience navigating the process, you can focus on creating your ideal space in your dream place.



SEE MORE DESTINATION HOMES
ON OUR WEBSITE

CLIFFSIDE PARADISE

Revitalizing and modernizing an iconic villa.

After this property was devastated by Hurricane Irma in 2017, International Builders took on the unparalleled logistics of repairing every aspect of the property and installing preventative features to protect against future damage.

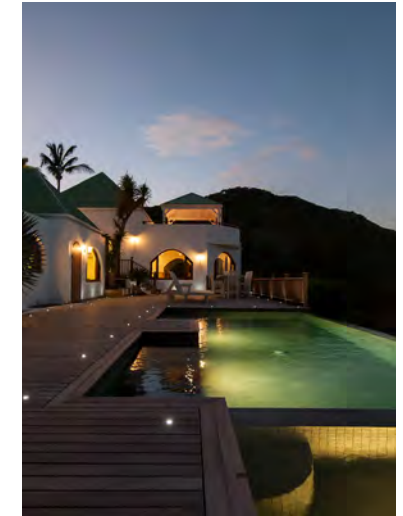


ST. BARTS

Pool deck with infinity pool



Aerial view of villa



Illuminated pool deck at dusk

ABOUT THIS PROJECT

Renovation to a hurricane damaged luxury villa

3,750 Sq. Ft.

Features

- Spacious pool deck
- Infinity pool and hot tub
- Sweeping ocean views
- Open kitchen and entertaining space
- Four private guest quarters



Living and dining room



Cliffside ocean view



Aerial view of villa

MODERN WATERFRONT IN JAMESTOWN

A breathtaking Rhode Island renovation.

This project involved modernizing nearly 5,000 square feet of waterfront property through renovation and a seamless addition. Emphasizing remarkable coastal views with a new full-glass facade, the added ceiling height required significant planning and approvals.



JAMESTOWN, RI

Sunlit living room with expansive view of harbor and Newport Bridge



Spacious living space



Modern kitchen with overflow stone island

ABOUT THIS PROJECT

Addition and complete interior renovation

4,740 Sq. Ft.

Features

- High ceilings with custom LED lighting
- State of the art kitchen
- Gas fireplace
- Expansive glass wall for unobstructed views of Narraganset Bay



Living room



Gas fireplace



Kitchen island

CAPE COD RENOVATION

Reimagining a coastal family compound.

Putting a modern spin on a classic Cape home, our complete renovation took notice of every detail to ensure this second home would be as beautiful and as functional as the family's primary residence.



Exterior front



Living room with cathedral ceilings



Gas fireplace and modern staircase

ABOUT THIS PROJECT

Complete renovation of waterfront
home and guest house

4,950 Sq. Ft.

Features

- Modern gas fireplace
- Custom cantilevered
stairway and mezzanine
- Coffered ceilings
- Shiplap finishes



Kitchen



Primary bedroom

“Charlie puts his heart and soul into every project and pays attention to every detail. His passion for executing the best product is flawless.”

DEBBIE AND NEAL SHALOM



Outdoor patio and deck



HISTORIC RENOVATIONS

Through craftsmanship, we're able to reconcile historic features with contemporary functionality.

Artful historic renovations begin with a deep understanding of historical context: materials used, techniques employed, and repairs or restorations that may have already been completed. Interpreting your home's historic features for modern life requires nuance, skill, and experience.



SEE MORE HISTORIC RENOVATIONS
ON OUR WEBSITE

HISTORIC BROOKLINE

**Built in 1890.
Renovated in 2023.**

An elegant shingle-style Victorian in Brookline's Pill Hill neighborhood, this home contained numerous architectural details that the homeowners wanted to preserve while modernizing the features and infusing their own personal aesthetic preferences.



 BROOKLINE, MA

Kitchen with large island



Living room



Entryway

ABOUT THIS PROJECT

Total renovation of historic home
built in 1890

Features

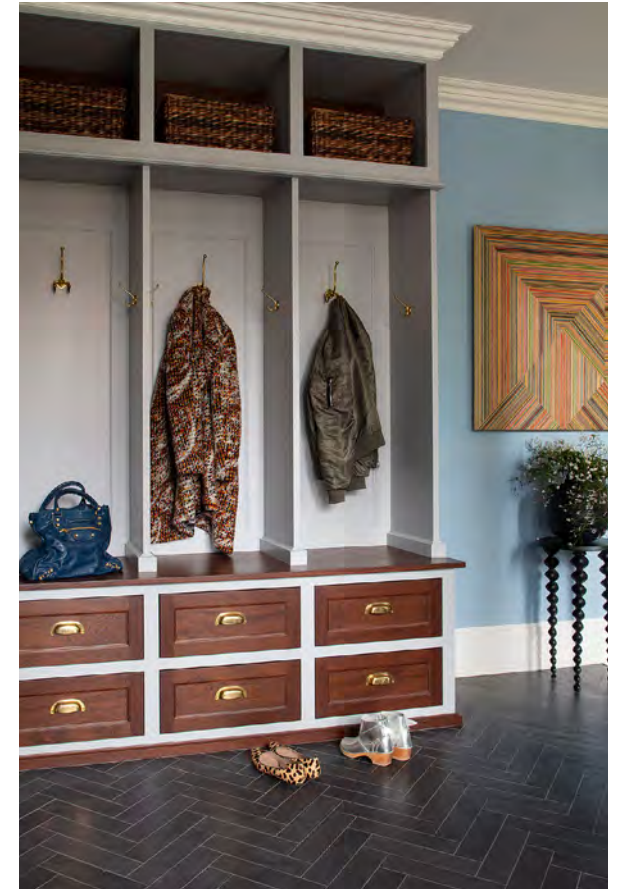
- Built in 1890
- New designer kitchen
- Classic moulding details
- Custom gas fireplace



Navy blue kitchen cabinetry with gold hardware



Sitting area



Mudroom built-ins

“From the very beginning of our project, to the very end of the project, International Builders has exceeded our expectations for craftsmanship, professionalism, and communication.”

ELIZABETH & PATRICK DUNN

CONCORD FRIEND BLOCK

Renewed vitality for a quintessential Concord landmark.

The Friend Block restoration project brought a unique set of challenges. The site, originally constructed in 1892, was on the National Registry of Historic Places, but lacked essential modern considerations including handicap access and energy-efficient features. The gut renovation implemented many new elements to comply with today's code standards.



“The Friend Block rehabilitation project brings new vitality to this prominent Main Street commercial building.”

THE CONCORD HISTORICAL COMMISSION

ABOUT THIS PROJECT

Restoration of a historic building in a busy town center

11,740 Sq. Ft.

Features

- 5 Office Spaces
- 3 Retail Locations
- Restoration of brick and masonry details
- Installed new elevator
- Updated interior layout
- Restored entire building structure





SINGLE FAMILY HOMES

Creating harmonious spaces that provide a beautiful backdrop for everyday life.

In some of the Boston area's most desirable towns and neighborhoods, International Builders has led new construction and expansive renovations to help families make the most of their homes.



SEE MORE SINGLE FAMILY HOMES
ON OUR WEBSITE

BELMONT

Bright and bold in Belmont.

From the front door, this first floor renovation achieves an inviting ambiance and improved flow for the homeowners. Kitchen updates, upgraded lighting, and custom built-ins complete the remodel.



Modern kitchen



Dining room



Sitting room built-ins

ABOUT THIS PROJECT

Complete residence remodel

3,500 Sq. Ft.

Features

Custom cabinetry
and built-ins

High ceilings

Modern chef's kitchen

Kitchen and family room
addition



Custom kitchen cabinetry



Entryway




Eat-in kitchen

SARGENT ROAD

Style and substance.

Balancing updates that made sense for modern family life with a respect for the traditional features of the home was the central challenge in this exciting Brookline renovation.



 BROOKLINE, MA

Formal dining room



Sitting area with gas fireplace



Fireplace detail

ABOUT THIS PROJECT

Traditional interior renovation

5,000 Sq. Ft.

Features

Classic moulding details
High ceilings
Custom fireplaces
Hardwood floors



Formal living room with traditional mouldings



Formal dining area with fireplace

WELLESLEY FARMS

Complete renovation of a transitional residence

This extensive renovation transformed a quaint, compact home into a stunning transitional residence, set within a beautifully landscaped garden. Retaining the original charm, the updated stucco exterior blends seamlessly with the modernized design. Inside, the home features sleek stainless-steel elements, warm walnut flooring, and two elegant fireplaces, creating a perfect balance of classic and contemporary style.



WELLESLEY, MA

Dining Room



Kitchen



Front walkway and porch

ABOUT THIS PROJECT

Complete residence remodel

3,500 Sq. Ft.

Features

- 10-foot ceilings
- Stucco exterior
- Walnut Floors
- Modern appliances
- Custom cabinetry
- Outdoor entertaining spaces



Living Room



Upstairs seating area



Exterior at night

RIVERDALE ROAD

Reimagined entertaining space

This remodel and first-floor addition was thoughtfully designed to seamlessly extend the dining room and kitchen, creating a spacious new family room and an inviting entertaining bar that flows out to a newly built deck and back patio.



WELLESLEY, MA

Spacious seating area off entertaining island



Entertaining space



Sitting room built-ins

ABOUT THIS PROJECT

Remodel and addition to existing home

Features

- Custom entertaining space with wet bar
- Full bathroom
- Outdoor access to new deck



Modern bathroom vanity



Marble shower



Entertaining island and wet bar

SEARS ROAD

A welcoming traditional renovation.

Balancing traditional features, including a stunning formal entry and living room with 17' ceilings, with contemporary upgrades to the kitchen and family spaces, this complete renovation project brought together the best of both worlds.



Formal dining room



Formal living room



Primary bedroom

ABOUT THIS PROJECT

Full interior renovation with traditional details

5,200 Sq. Ft.

Features

Vast entryway with custom mouldings
Classic white kitchen
Custom built-ins

ALBA ROAD

Transitional style in Wellesley Square.

High-end new construction complete with spacious bedrooms, ample indoor and outdoor space for entertaining, and stunning details throughout.



WELLESLEY, MA

Family room with breakfast nook



Deck and patio



Exterior front

ABOUT THIS PROJECT

Interior renovation and addition
with deck and outdoor patio

3,600 Sq. Ft.

Features

Classic moulding details
Updated traditional kitchen
Dark wood details
Deck and patio



CONDOS & APARTMENTS

Creating remarkable spaces in shared-use environments.

Whether in a multi-family building or a high-rise, condo and apartment construction projects demand a nimble team that can thrive among space constraints, board approvals, and other complicating variables. Our team embraces the challenge.



SEE MORE SINGLE CONDOS & APARTMENTS ON OUR WEBSITE

BEACON HILL TOWNHOUSE

Celebrating the comforts of home.

An ambitious renovation took this townhouse to the next level through custom built-in features, bold design choices, and improved flow.



Sitting area with custom built-ins and bar



Family room with gas fireplace



Laundry room

ABOUT THIS PROJECT

Interior renovation of
Boston apartment

Features

- State-of-the-art kitchen
- Gas fireplace
- Laundry room and pantry
- Custom bar and built-ins



Entryway and stairwell




Kitchen with large oak island

BACK BAY CONDO

A loft space, elevated.

A bright and airy renovation on iconic Exeter Street leverages a minimalist palette and unique loft ceilings to create a feeling of spaciousness in the heart of the city.

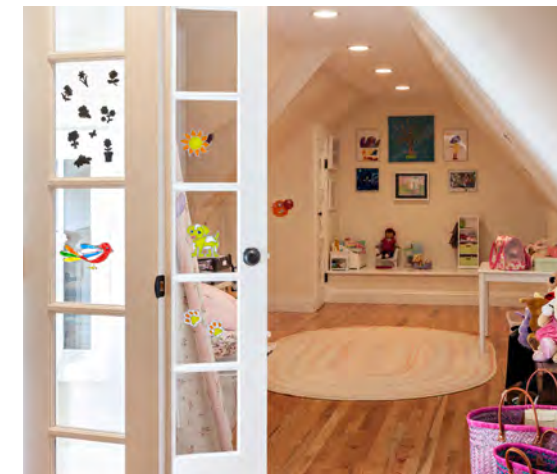


 BOSTON, MA

Kitchen



Living room



Loft and playroom

ABOUT THIS PROJECT

Interior renovation of living areas
with loft space

2,200 Sq. Ft.

Features

- Light and bright kitchen
- High-ceilings
- Loft space playroom
- Outdoor space



Living room and fireplace detail



Kitchen detail

“Charlie has an incredible talent to literally create space – maximizing the space that exists into a great living area for our family.”

SONIA AND RUSS HAUSER

WALNUT STREET

Taste and tradition on Beacon Hill.

Extensive custom millwork characterizes this elegant renovation, which optimized the usable space and proportions of the condo's floor plan.



Fireplace



Living room



Entryway and kitchen

ABOUT THIS PROJECT

Interior renovation of living areas with loft space

Features

- Light and bright kitchen
- High-ceilings
- Loft space playroom
- Outdoor space

WELLESLEY
HISTORIC DISTRICT

Stylishly updated condo in Wellesley.

This condominium has undergone a full interior renovation, offering a modern, clean aesthetic designed to appeal to a wide range of tenants. The seamless blend of cool tones and warm accents creates a welcoming atmosphere that feels truly like home.



Dining area



Custom kitchen island and built-in breakfast nook



Living room



Built-in bar fridge and window seat

ABOUT THIS PROJECT

Complete interior renovation

Features

- Hardwood floors
- Stainless steel appliances
- Modern bathroom



KITCHEN RENOVATIONS

Transforming a kitchen transforms the entire home.

Kitchens tend to be the domestic hub of celebration, creativity, and social life, so quality renovations tend to be both functionally and aesthetically impactful. Through intentional choices in the footprint and features, a renovated kitchen can reimagine your whole space.



SEE MORE KITCHEN RENOVATIONS
ON OUR WEBSITE

BROOKLINE KITCHEN

Bright and updated Kitchen for a historic Brookline home.

Incorporating high-end appliances, custom cabinetry, and an open floorplan, this project incorporated elements of the homeowner's personal style with full functionality of a modern entertaining kitchen.



 BROOKLINE, MA

Kitchen cabinetry



Custom range hood and backsplash



Custom kitchen island and built-in breakfast nook



Built-in bar fridge and window seat

ABOUT THIS PROJECT

Complete renovation of kitchen, dining, mudroom and bathroom

Features

High-end cabinetry

Custom island

Built-in storage in mudroom entryway

BEACON HILL KITCHEN

Maximizing and modernizing every square foot.

When space is at a premium, every square inch of a functional space like this kitchen must be carefully considered. Materials, layout, and appliances were all deliberately chosen to ensure the ideal use of the available space.

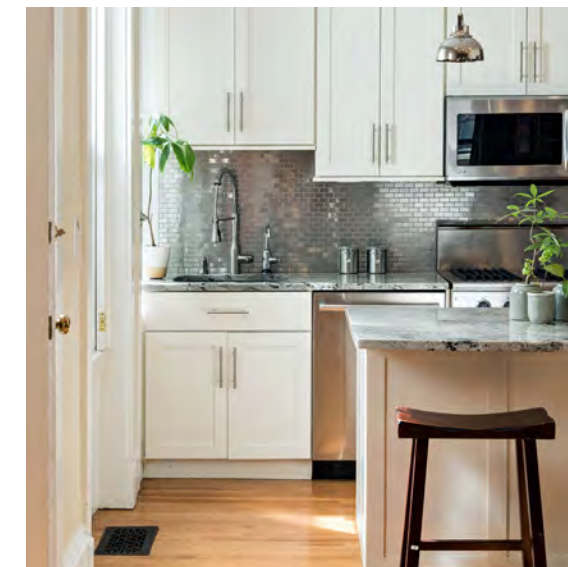


BOSTON, MA

Eat-in kitchen with extensive cabinetry



Kitchen island



Stainless appliances and finishes

ABOUT THIS PROJECT

Kitchen renovation to
Beacon Hill condo

Features

- Stone countertops
- White cabinetry
- Updated appliances
- Hardwood floors

COMMERICAL SPACES

Lets take your
business to the
next level.

With International Builders, Inc. in your corner, it doesn't matter if you want to build a new office from the ground up or need to renovate your existing retail space. We've got the experience and the expertise you can rely on to get the job done the right way.

**OUR COMMERCIAL PROPERTY
EXPERTISE INCLUDES:**

- Upscale retail
- Office suites
- Multi-dwelling residential
- Luxury hospitality
- Restaurants



SEE MORE COMMERCIAL PROJECTS
ON OUR WEBSITE



Friend block storefront, Concord, MA



Shreve, Crump & Low storefront, Boston



Shreve, Crump & Low interior display

“While the quality of their work is beyond reproach, equally important is that they always stand by their work and are readily accessible before, during and after a project.”

CYNTHIA BLACK



Toscano Restaurant, Boston



Goorin retail store, Boston



Serving New England since 1998.